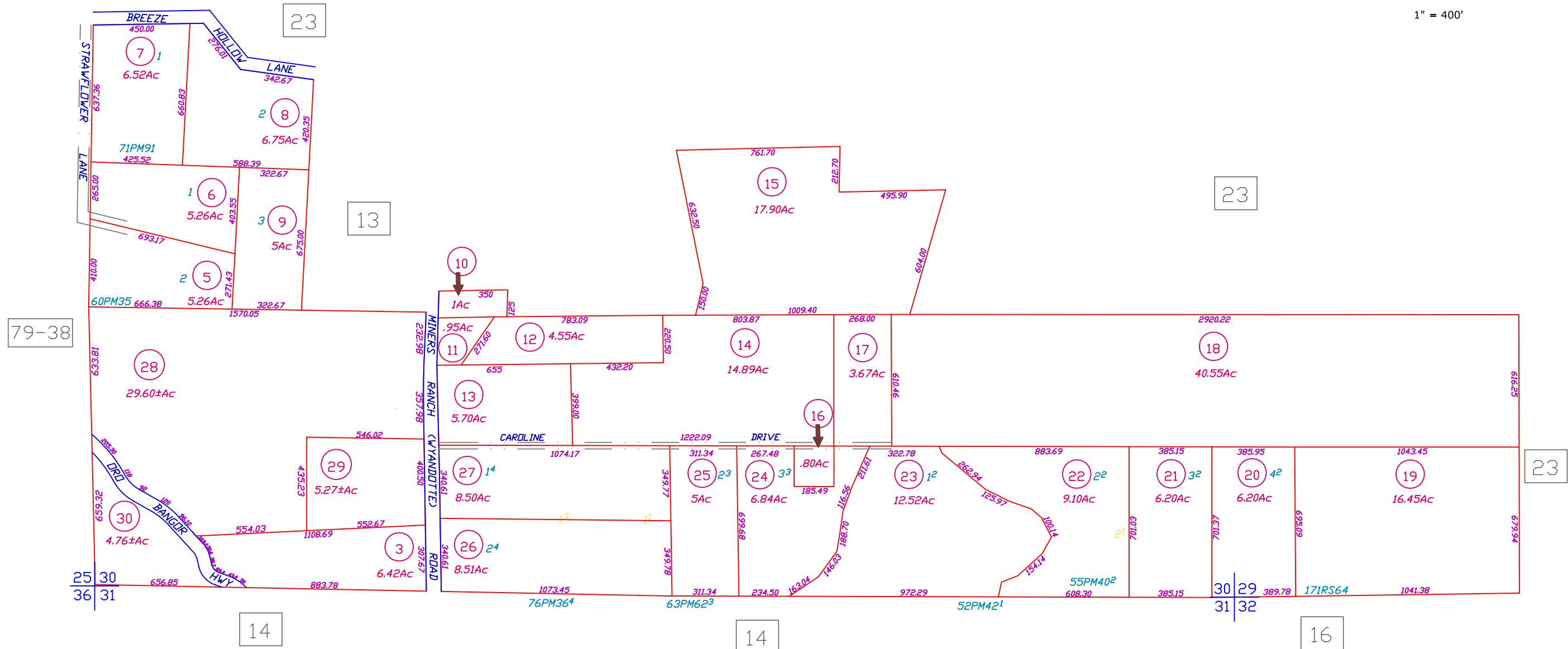




1" = 400'



Butte County Assessor's Map  
Book 72, Page 49

All Assessor's maps are prepared for local property assessment purposes ONLY. Parcels shown thereon may not comply with State and local subdivision ordinances. No liability is assumed for use of information shown on any Assessor's map. ALL ACREAGES APPROXIMATE PER RECORDED INFORMATION.

Created by:	DB	Created on:	08-16-2010
Revised by::	SL	Revised on:	09-01-2011
File Name:	72-49	Effective roll:	2011-2012
Previous Book 72, Page 23			